

An aerial photograph of agricultural fields. The top-left corner shows a vibrant green field, while the rest of the image is dominated by a large, brownish-tan field, possibly a dry lake bed or a field of dormant crops. Three dark shadows of commercial airplanes are cast across the landscape: one in the top-left green field, one in the top-right brown field, and one in the bottom-right green field. The overall scene is captured from a high angle, showing the textures and patterns of the land.

**HITACHI**

# **For the Mission Critical.**

**Hitachi Vantara Federal Customer Stories**

**HITACHI**

# **Innovate with Hitachi Vantara Federal.**

**We're for the mission critical.**

**From advanced data storage platforms to comprehensive infrastructure and engineering services, our solutions are trusted by every Cabinet and Armed Forces agency to power their missions.**

# Our Partnerships

Hitachi Vantara Federal empowers federal agencies to use data strategies in ways that generate competitive advantages, foster digital transformation, and deliver mission results. Can we help transform your mission?

**01** Modernizing  
Multimedia  
Archives

**02** Detecting &  
Defending  
Against  
Orbital  
Threats

**03** Centralizing  
Regional Data  
and Records

**04** Scaling  
Secure  
Enterprise  
Cloud Service  
Delivery

**05** Dramatically  
Shrinking  
Data Center  
Footprint

**06** Powering  
Nonstop  
Scientific  
Discovery

**07** Modernizing  
Records  
Management

**08** Boosting  
Public Safety  
and Traffic  
Efficiency

**09** Predicting &  
Preventing  
Illegal  
Deforestation

**10** Modernizing  
Electronic  
Records  
Application  
Infrastructure

**11** Providing Law  
Enforcement  
with Critical  
Information

**12** Providing  
Cost-Effective  
Weather  
Insurance

**13** Modernizing  
Medicare  
Processing

**14** Delivering  
Data-Driven  
Intelligence  
Globally

**15** Enhancing  
Healthcare  
Services

# Modernizing Multimedia Archives

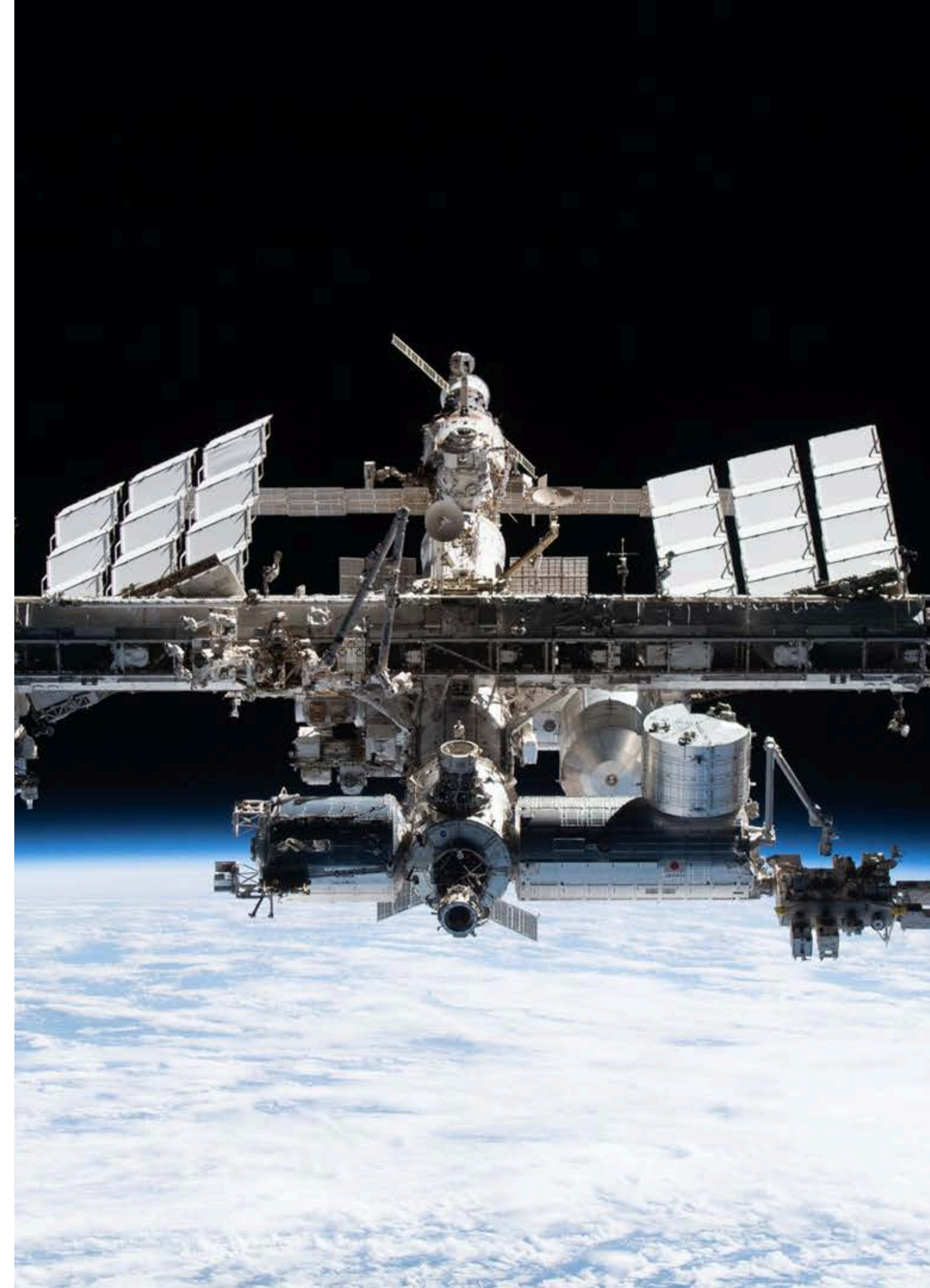
An international laboratory built and operated by multiple countries around the world was tasked with fostering a low-earth orbit economy, developing technology to support taking humans deeper into space, and conducting fundamental research in physics and biology to help the people of earth.

A U.S. Space Agency maintained the previous imagery repository for this laboratory, which dated back to the shuttle era and was no longer keeping pace with the performance, scalability, and availability demands of global customers.

This agency engaged Hitachi to successfully implement a new hybrid cloud data storage repository that would scale with the agency's growing demand for data and deliver performance and data availability aligned to the agency's mission needs.

## **OUTCOME**

- Highly scalable data storage with hybrid cloud capabilities
- Immediate and uninterrupted access to data
- Predictable pricing and lower total cost of ownership (TCO)



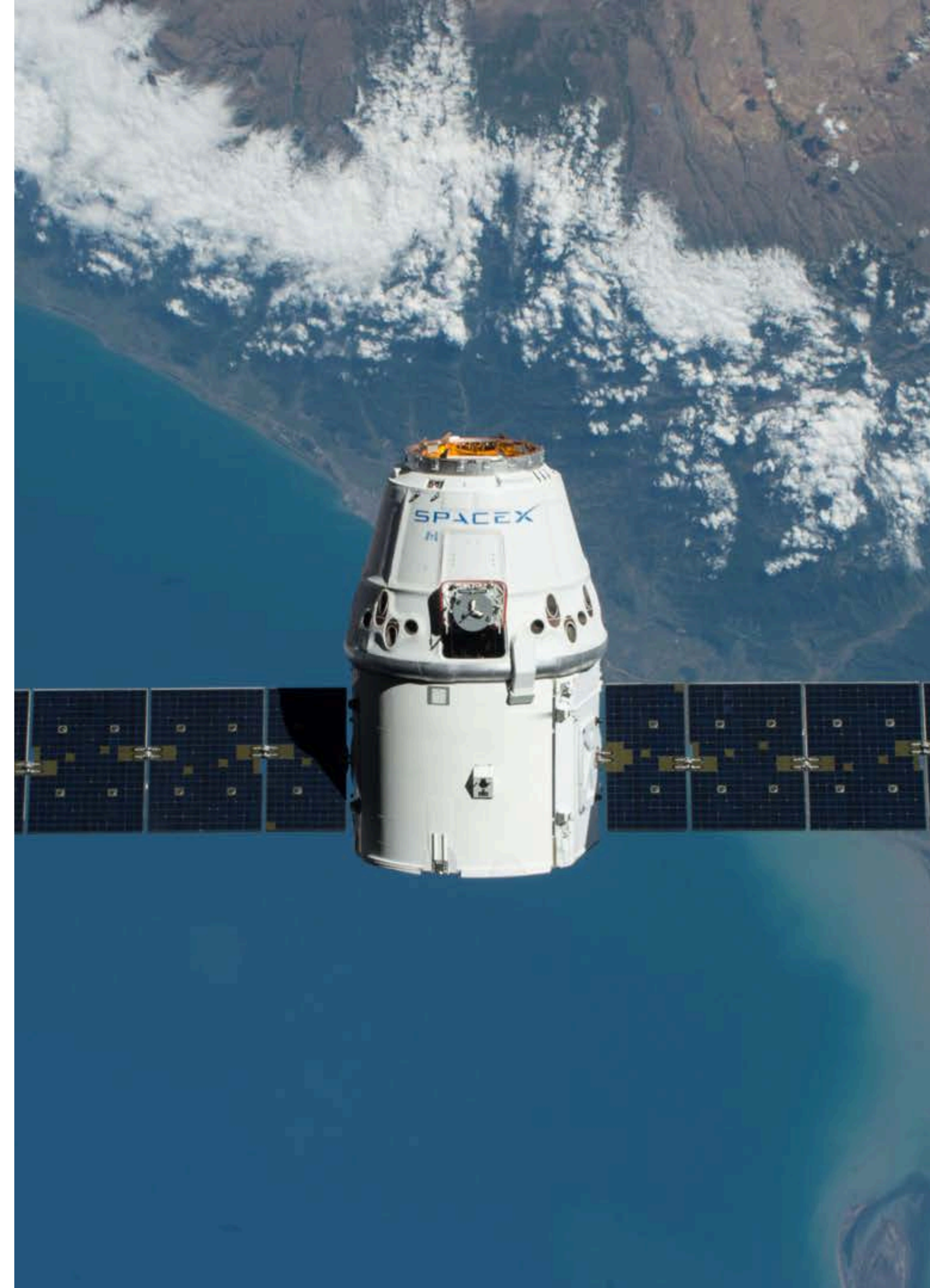
# Detecting and Defending Against Orbital Threats

A U.S. Defense Agency required architecting a medium-earth orbit missile tracking system that would transmit data collected from SBIRS and next-gen OPIR satellites to a ground system for real-time processing and advanced threat detection.

Hitachi and a major federal systems integrator successfully architected and delivered a data platform that could ingest, store and process telemetry, multimedia, and other data at the scale and performance needed to support next-generation application workloads and generate real-time intelligence.

## **OUTCOME**

- Future-focused scalable and expandable storage foundation
- Uninterrupted availability and accessibility of mission-critical data
- Performant storage foundation for next-generation application workloads



# Centralizing Regional Data and Records

A U.S. Justice Department agency tasked with handling the nonjudicial, administrative business such as maintaining statistics, archiving records, and managing court budgets underwent a major initiative to integrate data from regional courts and offices into a centralized data lake/data warehouse.

This agency partnered with Hitachi, and together developed an automated data integration and management solution that would serve as the underlying technology for the data warehouse's ingest, orchestration, and ongoing reporting and advanced analytics.

## **OUTCOME**

- Automated data integration from over one hundred regional courts
- Orchestration of several disparate data formats and types into one unified environment
- Enhanced data visibility, reporting and analytics capabilities

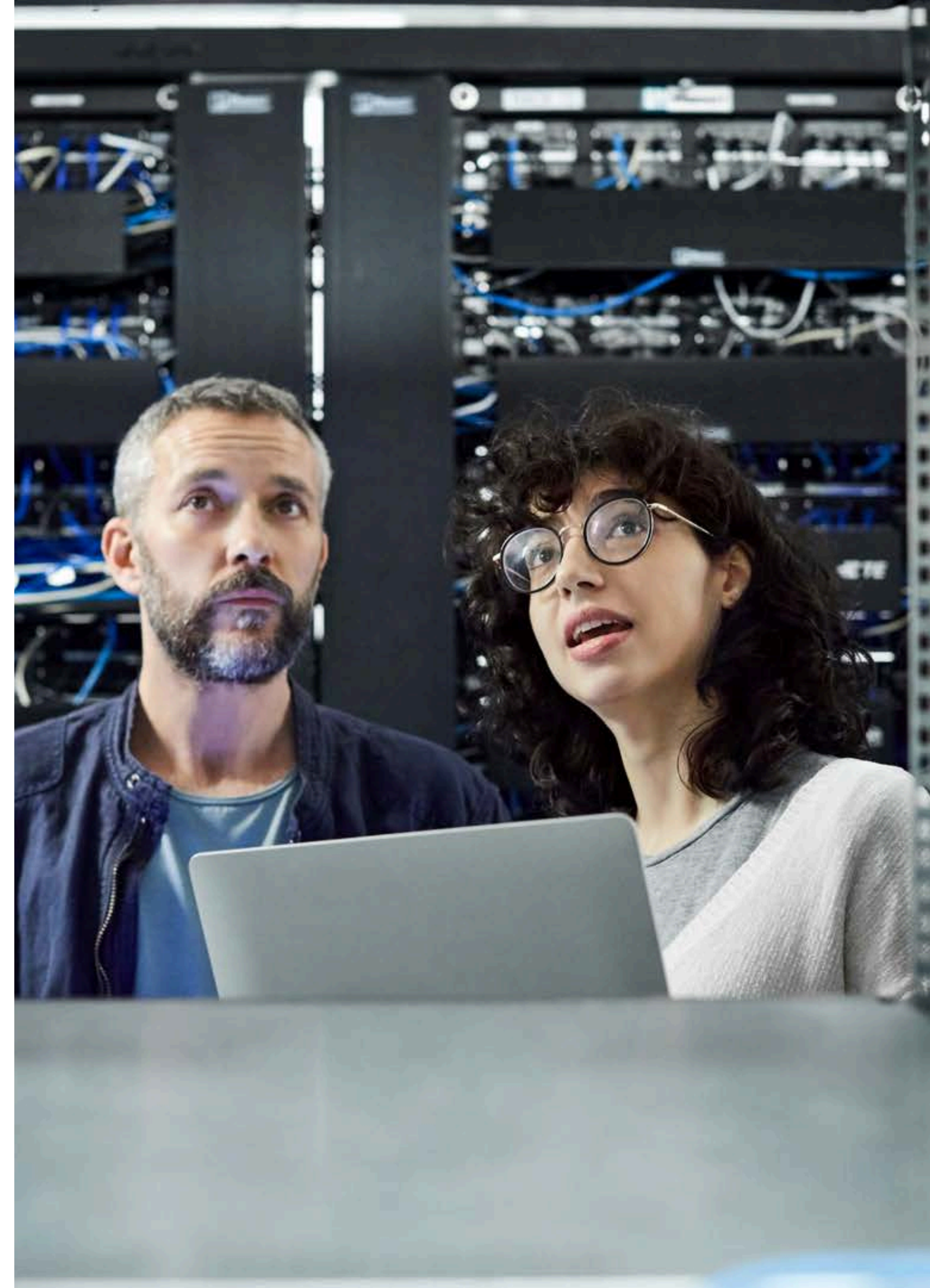


# Scaling Secure Enterprise Cloud Service Delivery

A U.S. Civilian Agency's fee-for-service organization, responsible for the management and operation of data center hosting services to tenant agencies across government, successfully partnered with Hitachi to modernize its enterprise block storage capacity in support of its tenants' diverse application workloads and to architect a new enterprise-level backup and recovery as-a-Service capability to support cloud workloads.

## **OUTCOME**

- Highly simple, scalable data storage with hybrid cloud capabilities
- Cost-effective and predictable cloud-like customer experience
- FedRAMP High-certified cloud-extensible backup capability
- Automated infrastructure management
- 30% cost savings compared to customer architecting their own private cloud solution
- Enhanced security-based analytics to identify and mitigate potential cyber threats



# Dramatically Shrinking Data Center Footprint

U.S. Defense Agency tasked with operating and defending the Department of Defense's (DOD) key cyber terrain and providing information technology (IT) services to Pentagon and National Capital Region (NCR) customers engaged Hitachi to successfully modernize its enterprise storage data services for open system and mainframe block, file services, and object storage archival - with synchronous and asynchronous replication between four different sites and four different security enclaves.

## OUTCOME

- Non-disruptive migration to new storage infrastructure
- Improved performance with all-flash NVMe
- Increased resiliency for mission-critical workloads
- Reduced future storage refresh timeframes by 75%
- Eliminated stranded storage capacity
- Reduced data center footprint by 25%





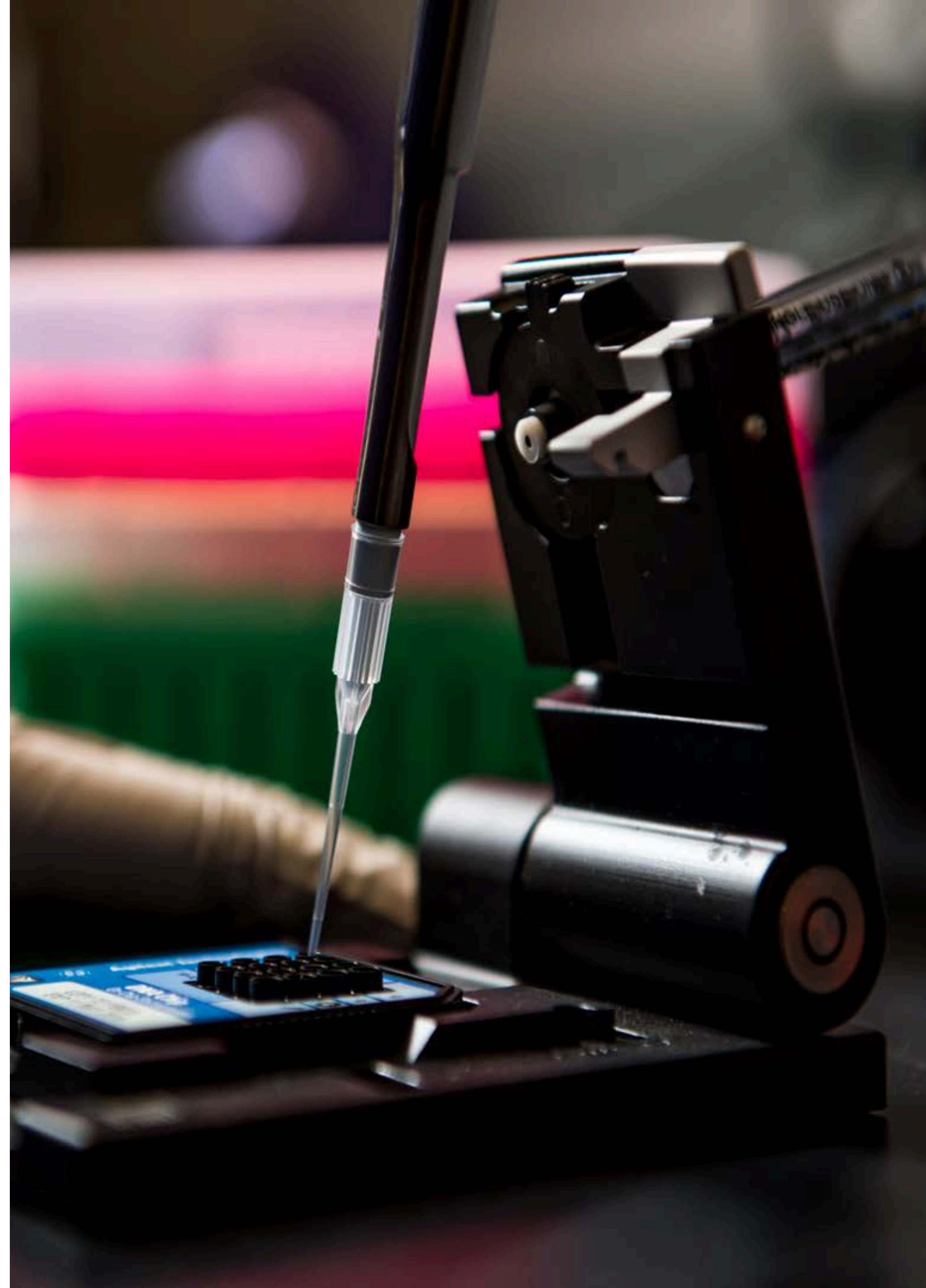
# Powering Nonstop Scientific Discovery

A multidisciplinary U.S. national laboratory and federal funded research and development center (FFRDC) was conducting research across biological science, computing and mathematics, environmental science, engineering science, materials and advanced manufacturing, nanodevices and microsystems, physical science, and radiation and high energy physics.

This national laboratory partnered with Hitachi to successfully modernize its storage infrastructure supporting Virtual Desktop Infrastructure (VDI) and other application workloads across multiple networks and levels of classification.

## **OUTCOME**

- Uninterrupted access to mission-critical data for VDI users across the laboratory and its tenants
- Future-proof performant and resilient flash storage infrastructure for next-generation application workload demands



# Modernizing Records Management

An office of the U.S. Executive Branch routinely moves massive amounts of records and materials from one agency jurisdiction to another, which assumes legal and physical custody of those materials and archives the records for public access via the Freedom of Information Act (FOIA).

This office partnered with Hitachi to successfully ingest, index, and catalog digitized records into a common object based system with replicability across data centers and in the cloud, shortening the end to end collection and archiving process by nearly 6 months each transfer.

## **OUTCOME**

- A long-life repository that enables instant access to structured and unstructured data from authorized users and seamless handoff of data to the recipient agency
- Replication to DR site and cloud for enhanced data availability and disaster recovery
- More comprehensive and efficient data discovery capabilities for improved FOIA fulfillment



# Boosting Public Safety and Traffic Efficiencies

Moreno Valley is bordered by hilly terrain, freeways and a military air base. These presented complex challenges for the city as it pursued a community-wide camera system to improve public safety.

The municipality partnered with Hitachi and numerous public and private entities to build an innovative and effective video ecosystem. This co-creation approach resulted in the ability of the customer to deliver better traffic flow through city intersections, faster and more accurate emergency response, and greater situational awareness throughout the jurisdiction.

## OUTCOME

- Multiple jurisdictional collaboration and information sharing
- Real-time visibility of multiple information systems
- Accelerated proactive response and situational awareness
- Highly scalable software and hardware for future expansion



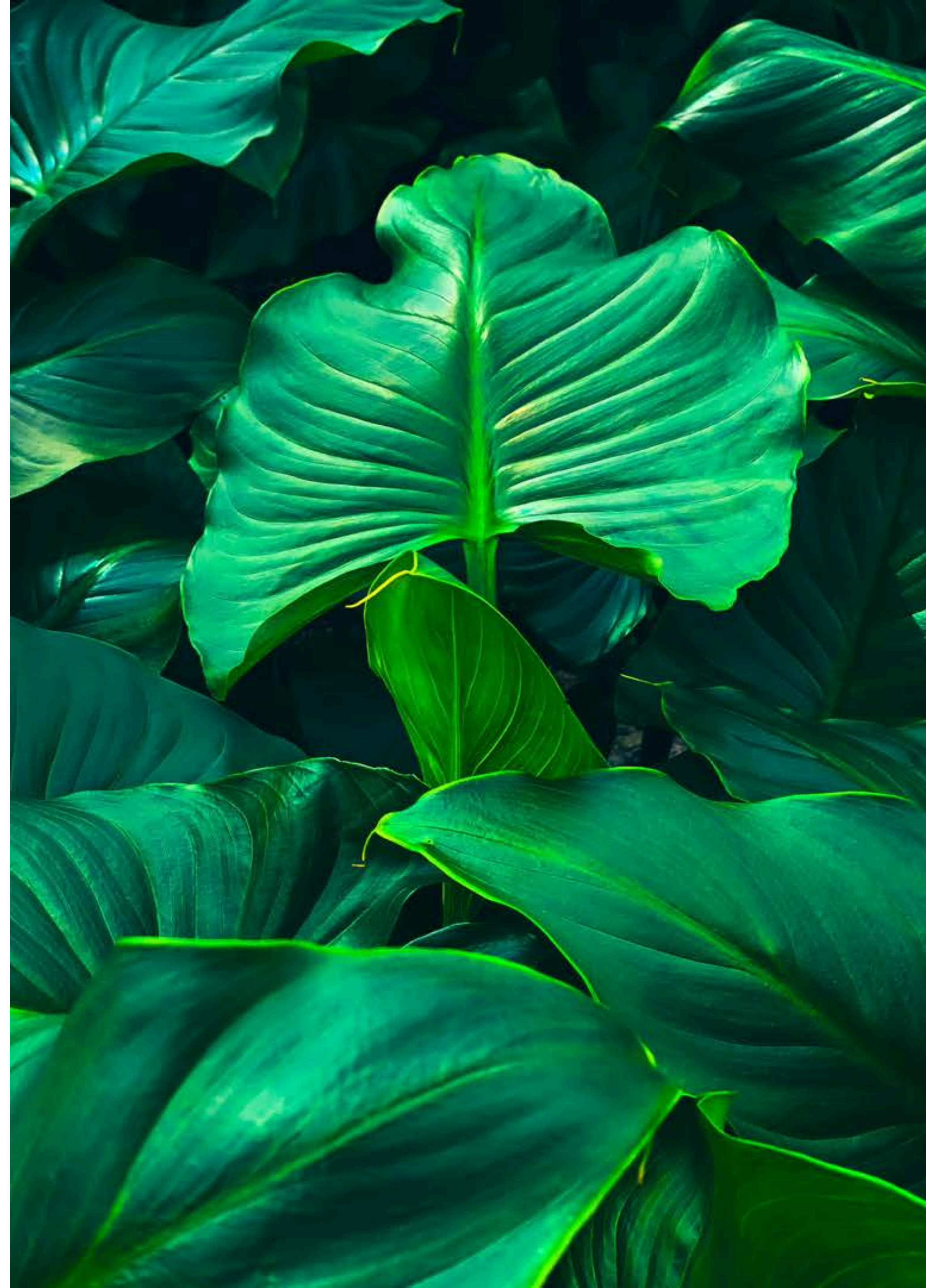
# Predicting and Preventing Illegal Deforestation

In Sumatra, the Indonesian government recognizes that forests are vital to economic and environmental safety of the communities and authorizes them to protect local forests from illegal logging. With only a few rangers to patrol large forest areas just a few times per month, illegal logging was often discovered only after it had occurred.

Using years of eco-acoustic data collected by Rainforest Connection's 'Guardian' system, Hitachi developed a baseline of forest sounds and built predictive algorithms and AI to detect anomalies such as voices or disturbed birds flying up - sounds that precede logging - empowering local villages with data-driven warnings to help stop illegal logging before it starts.

## **OUTCOME**

- Provide rangers on the ground with advance warning of illegal logging activities
- A more agile, scalable and secure cloud platform that will safeguard bio-acoustic data
- Ability to save more trees and animals and reduce global carbon emissions



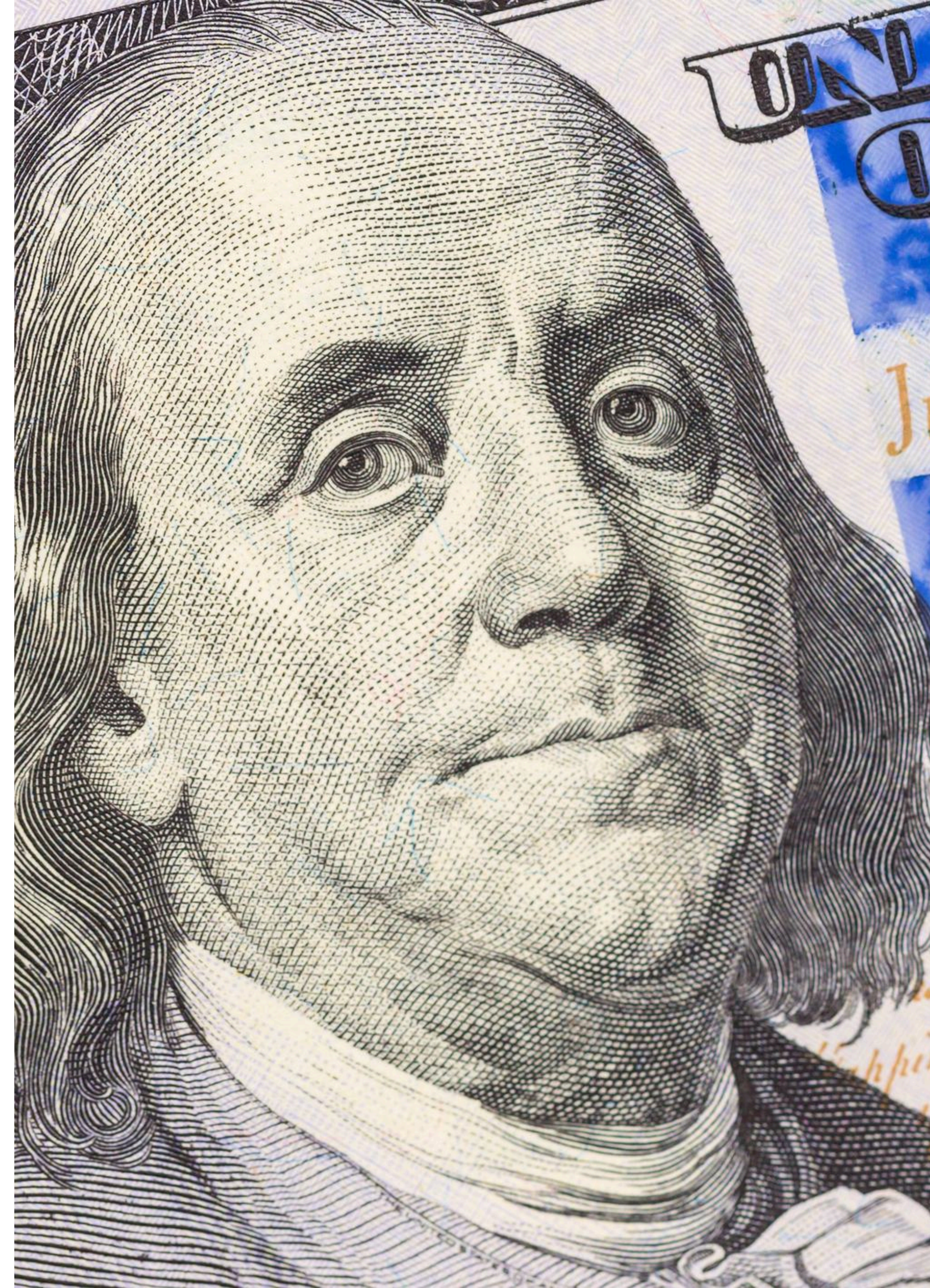
# Modernizing Electronic Records Filing Application Infrastructure

A U.S. Financial Agency needed to upgrade its antiquated mainframe computers; not all computer systems could talk to each other, information wasn't available in real time, and records filed on paper were often manually entered by typists.

As part of a broader effort to digitally transform its operations, this agency partnered with Hitachi to architect a digital foundation that would scale and perform to meet growing workloads, such as electronic records filing applications, and accelerate data replication between its main data centers.

## **OUTCOME**

- Improved performance with enterprise-class NVMe
- Increased resiliency for mission-critical workloads
- Accelerated data replication between main data center sites
- Connectivity between legacy storage implementations and e-file application host
- Scalable foundation for current and future diverse application workloads



# Providing Law Enforcement with Critical Information

A U.S. Federal Law Enforcement Agency was tasked with delivering timely, accessible, and relevant criminal justice information to qualified law enforcement and other licensed organizations in order to enhance officer safety and achieve law enforcement objectives.

This agency had a longstanding partnership with Hitachi, and engaged Hitachi to successfully bolster its data storage capabilities to support mission-critical applications such as background checks and identity history.

## **OUTCOME**

- Performant, scalable mainframe storage capacity
- Increased resiliency for mission-critical workloads
- Uninterrupted data availability
- More accurate and timely law enforcement intelligence



# Providing Cost-Effective Weather Insurance

A U.S. Civilian Agency provides cost-effective, weather-related insurance to property owners, renters and businesses.

This agency partnered with Hitachi to address their complex data integration and orchestration requirements supporting the insurance program. These requirements included a variety of data types including weather, geospatial, time series, and other data sources that are used to forecast demand and inform decision-making for the agency.

## **OUTCOME**

- Improved data intelligence and analytics capabilities
- Enhanced decision-making
- More efficient demand forecasting and cost planning



# Modernizing Medicare Processing

Federal healthcare contractor National Government Services (NGS), an Anthem Company, has been helping the United States build its most critical healthcare programs since 1966. Many of NGS' IT systems were built in the 1990s and include legacy technologies, such as magnetic tape. Managing these complex systems was both resource-intensive and time-consuming.

NGS has partnered with Hitachi in a successful, multi-year effort to modernize its legacy storage technology and architect a more future-proof digital infrastructure for claims processing and case management.

## OUTCOME

- Reduced time for system backups by 38%.
- Cut time needed to sync environments by quarter by 85%.
- Delivered double-digit gain in administration efficiency.
- Increased reliability and supported innovation.





# Delivering Data-Driven Intelligence Globally

A U.S. Intelligence Agency supporting mission partners and global tenants engaged Hitachi to transform their mission-critical data infrastructure.

Over the course of several years, Hitachi successfully virtualized and migrated the agency's legacy storage infrastructure between global data centers, modernized core infrastructure with enterprise block storage, digitally transformed the infrastructure from NAS to cloud, and implemented a modern, resilient backup and recovery strategy.

## **OUTCOME**

- Unmatched data availability, scalability, and resiliency
- Readily available intelligence for mission partners and global tenants
- Data foundation for mission-critical application workloads
- Non-disruptive migration between sites



# Enhancing Healthcare Services

A U.S. federal integrated health care system partnered with Hitachi to ingest, orchestrate, and analyze health and lifestyle data from patients enrolled in a trial program to uncover trends, inform process changes, and ultimately pursue better health outcomes.

## **OUTCOME**

- Integrated various data types and sources into a common management framework
- More efficient and effective analysis of individual and collective patient conditions and behavior
- New insights generated for better patient outcomes



# Get in Touch.

## Hitachi Vantara Federal



**Corporate Headquarters**

11950 Democracy Drive, Suite 200  
Reston, VA 20190, USA

**Contact Information**

info@hitachivantarafederal.com  
hitachivantarafederal.com/contact-us/

© Hitachi Vantara Federal, Corporation 2025. All Rights Reserved. HITACHI and Pentaho are trademarks or registered trademarks of Hitachi, Ltd. All other trademarks, service marks and company names are properties of their respective owners.